

# Metallic Systems

## SPL Fitting Type B



### Technical Characteristics


Conforms to BSI Kitemark KM-35161  
CE mark to the Low Voltage Directive  
Inherent Low Fire Hazard

Approvals and Standards  

Degree of mechanical protection Very High

Degree of protection IP67 - with all [Adaptasteel](#) liquid tight conduit in the series

UV protection Very High

Fitting characteristics  Straight fitting - swivel external male thread

Application For insertion into threaded entries & knockouts using a locknut

Normal operating temperature range	Application	Min Temp	Max Temp
	Static	- 65°C	+150°C
	Dynamic	- 45°C	+150°C

For use with - Conduit series Type [SPL](#), [SPL-EF](#), [SPLHC](#) & [SPUL](#)

Fire performance	Test Standard	Performance Rating
	Not Rated	Not Rated

Testing data [Click or see page 4](#)

Type of material Nickel Plated Brass, Co-Polyester seal - Nylon inserts



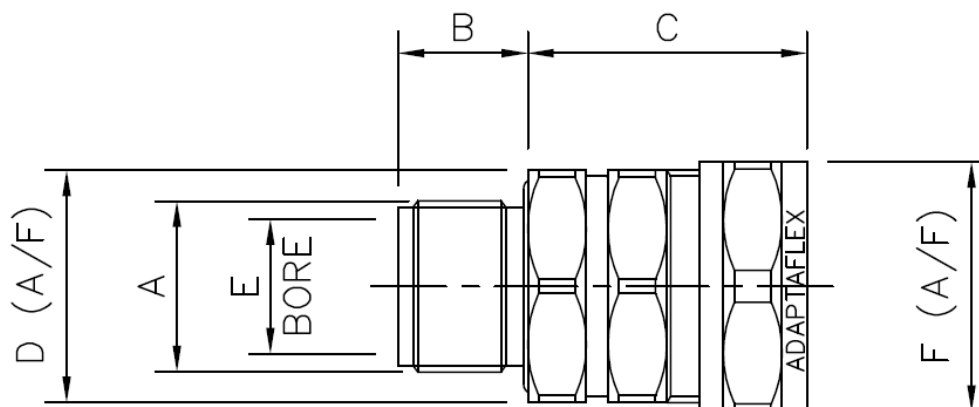
# Metallic Systems

## SPL Fitting Type B



### Dimensional Data

Part No	Thread A	Nominal Dimensions (mm)				Nominal Conduit - $\varnothing$ F (mm)
		B	C	D	E	
SPL12/M16/B	M16 x 1.5	13.0	27.0	22.0	10.3	24.0
SPL16/M20/B	M20 x 1.5	13.5	27.0	24.0	10.3	24.0
SPL20/M20/B	M20 x 1.5	15.0	31.0	25.4	14.3	27.0
SPL25/M25/B	M25 x 1.5	17.0	40.0	32.0	17.6	34.0
SPL32/M32/B	M32 x 1.5	19.0	48.0	38.0	24.0	42.0



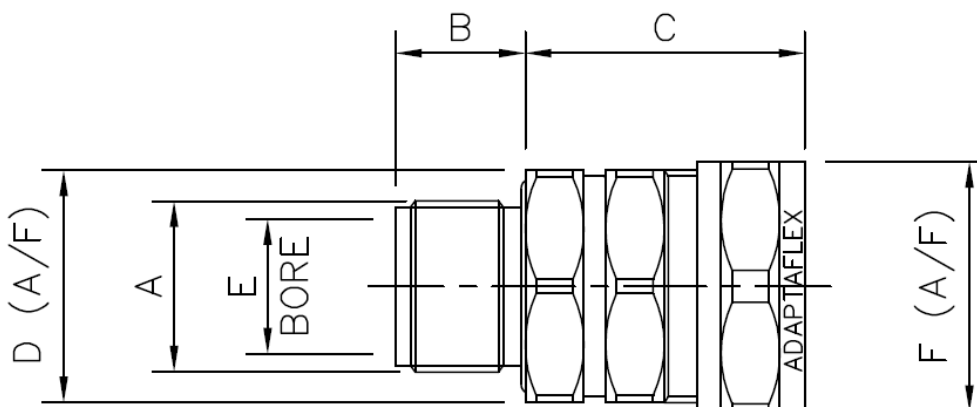
# Metallic Systems

## SPL Fitting Type B



### Dimensional Data

Part No	Thread A	Nominal Dimensions (mm)				Nominal Conduit - $\varnothing$ F (mm)
		B	C	D	E	
SPL16/PG11/B	PG11	10.0	11.5	25.5	10.3	17.0
SPL16/PG13/B	PG13.5	13.5	27.0	24.0	10.3	24.0
SPL20/PG16/B	PG16	12.0	15.3	29.0	14.3	21.0
SPL25/PG21/B	PG21	12.0	19.0	36.5	17.6	26.0
SPL32/PG29/B	PG29	14.0	26.2	39.0	24.0	34.0



# Metallic Systems

## SPL Fitting Type B



### Chemical Resistance Chart

<b>Key:</b>	● Astm No.1	● Diesel oil	● Methyl Bromide	● Sulphur Dioxide (Gas)
	● Astm No.2	● Diethylamine	● MEK	● Sulphuric Acid (10%)
	● Astm No.3	● Ethanol	● Nitric Acid (10%)	● Sulphuric Acid (70%)
	● Acetic Acid (10%)	● Ether	● Nitric Acid (70%)	● Toluene
	● Acetone	● Ethylamine	● Oxalic Acid	● Transformer Oil
	● Aluminium Chloride	● Ethylene Glycol	● Ozone (Gas)	● 1,1,1-Trichloroethane
	● Aniline	● Ethyl Ethanoate	● Paraffin oil	● Trichloroethylene
	● Benzaldehyde	● Freon 32	● Petrol	● Turpentine
	● Benzene	● Hydrochloric Acid (10%)	● Phenol	● Vegetable Oil
	● Carbon tetrachloride	● Hydrochloric Acid (36%)	● Sea Water	● Vinyl Acetate
	● Chlorine water	● Hydrogen Peroxide (35%)	● Silver Nitrate	● Water
	● Chloroform	● Hydrogen Peroxide (87%)	● Skydrol	● White Spirit
	● Citric Acid	● Lactic Acid	● Sodium Chloride	● Zinc Chloride
	● Copper Sulphate	● Lubricating oil	● Sodium Hydroxide (10%)	
	● Cresol	● Methanol	● Sodium Hydroxide (60%)	

The information above is given as a guide only and is based on published technical data and experience. The chemical resistance of the above products is dependant on factors such as chemical exposure, concentration of the chemical and temperature. The above chemicals are valid for a temperature of 23°C. Use of the above table is at the users own discretion and risk. Those using it must satisfy themselves that their application presents no health and safety risks. The end user should assess compatibility with their application and contact Thomas & Betts for further information.

ADHERENCE TO THE CURRENT WIRING REGULATIONS BS7671 OR NEC WIRING REGULATIONS (FOR USA) IS STRONGLY ADVISED.

MINIMUM BEND RADIUS FOR FLEXING IS DEPENDANT UPON MINIMUM TEMPERATURE, BENDING FREQUENCY AND CHEMICAL ENVIRONMENT.

### Thread Data

Metric	Standard thread conforming to EN60423 & BS3643			PG	German Standard thread conforming to DIN40430		
	Ext Thread Outside Diameter	Int Thread Inside Diameter	Pitch		Ext Thread Outside Diameter	Int Thread Inside Diameter	Pitch
M10	10.0	8.9	1.0	PG7	12.5	11.3	1.27
M12	12.0	10.4	1.5	PG9	15.2	13.9	1.41
M16	16.0	14.4	1.5	PG11	18.6	17.3	1.41
M20	20.0	18.4	1.5	PG13.5	20.4	19.1	1.41
M25	25.0	23.4	1.5	PG16	22.5	21.2	1.41
M32	32.0	30.4	1.5	PG21	28.3	26.8	1.59
M40	40.0	38.4	1.5	PG29	37.0	35.5	1.59
M50	50.0	48.4	1.5	PG36	47.0	45.5	1.59
M63	63.0	61.4	1.5	PG42	54.0	52.2	1.59
M75	75.0	73.4	1.5	PG48	59.3	57.8	1.59